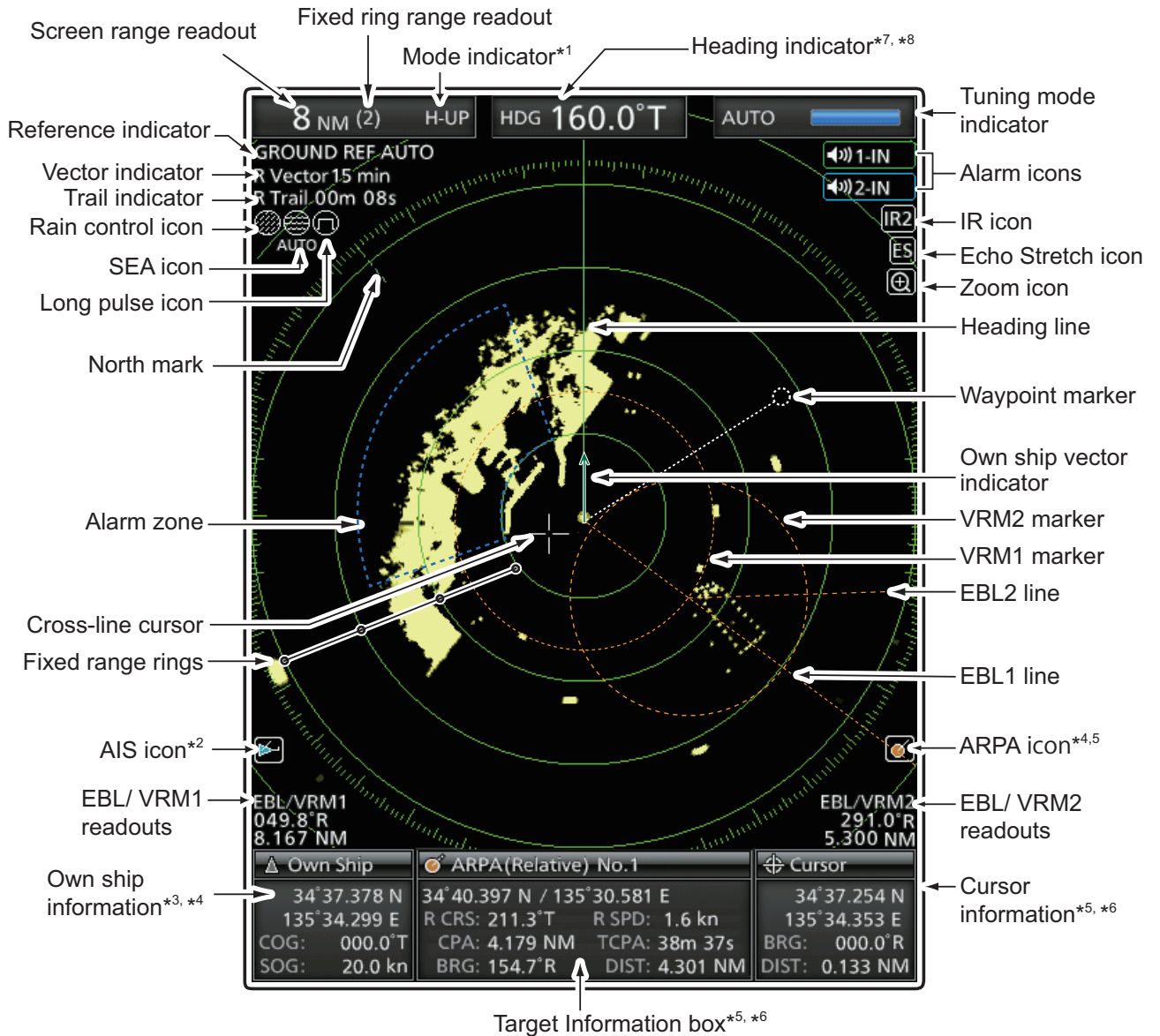


Refer to the Instruction Manual for details about the ARPA, the AIS receiver, and DSC functions,

## ■ Display information



\*1 North-up and Course-up screens can be used only when a bearing input (NMEA, N+1 or AUX) is connected.

\*2 AIS data is required.

\*3 Your position data is required.

\*4 GPS data is required.

COG (Course Over Ground), SOG (Speed Over Ground)

\*5 Bearing data and position data are required.

\*6 R: Relative bearing, T: True bearing, M: Magnetic bearing

\*7 T: True bearing, M: Magnetic bearing

\*8 COG (Course Over Ground) is displayed when the "Bearing Input" item in the Initial menu is set to "GPS" or "GPS-L."

When using COG instead of HDG, the heading indicator may differ from the vessel's actual bow direction.

# MENU screen operation

1 Push / to enter the Menu screen.

2 Push to select the menu.

3 Push to select an item.

4 Push to enter the option selection mode.

5 Push to select an option.

6 Push to save the setting and exit the option selection mode.

7 Push / to exit the Menu screen.

# MENU list

## Color

- Echo Color Steps
- Heading Line Brill
- Ring Brill
- ARPA/AIS Brill
- EBL/VRM/PI Brill
- Other symbol Brill
- Character Brill
- Day Color Setting
- Night Color Setting
- User Color Setting

## Trail

- Reset
- Reference
- Time
- Color
- Level

## Display

- Own Vector
- PPI Area
- AUTO Hide Information
- WPT Display
- Mark Display
- DSC Display
- Cursor Information

## Target

- Vector Mode
- Vector Time
- Track Interval
- CPA Limit
- TCPA Limit
- CPA/TCPA Alarm

## ARPA

- Function
- Auto Acquire
- Track
- No. Display
- All Clear Target

## AIS

- Display
- Track
- Name Display
- Auto Activate
- Auto Activate - Distance
- Auto Activate - Angle
- New Target Warning
- Display Range
- Number of AIS
- Slow Warn
- Slow Warn Speed
- Erase Lost Target
- Safety Message
- Favorite AIS
- Favorite AIS Range
- Favorite AIS Target 1/2/3

## System

- Key Beep
- Sync Backlight
- HL OFF Mode
- Zone Alarm 1/2
- Zone Alarm Level
- OFF Center Mode
- Save Time
- Bearing Mode
- Variation
- Manual Variation
- Bearing Reference
- Speed Input
- Manual Speed
- Manual SET
- Manual Drift
- TLL Mode
- STBY Mode
- Rev.

## Video

- TUNE
- Manual Tune
- Dynamic Range
- IR
- Echo Stretch
- Pulse Width
- SEA Curve
- Antenna Height

## Initial

- Distance Unit
- Speed Unit
- Date Display
- Language
- Bearing Input
- TX Inhibit
- TX Inhibit Start
- TX Inhibit Angle
- Timing Adjust
- Heading Adjust
- Antenna Rotation Speed
- Range Ring
- Range
- Save Settings 1/2/3
- Load Settings 1/2/3
- Setting Reset
- Factory Reset

## AIS Own

## Status

## Port Monitor

- NMEA1 RX
- NMEA2 RX
- NMEA2 TX
- AIS RX
- DSC RX

## Scanner Monitor